

Youth Road Safety

Fact Sheet



VICTORIA POLICE

Whether you're biking or riding an e-scooter, follow these simple road safety tips to stay safe and have fun on the move!

MODIFIED OR PETROL POWERED BICYCLES

- Illegal.



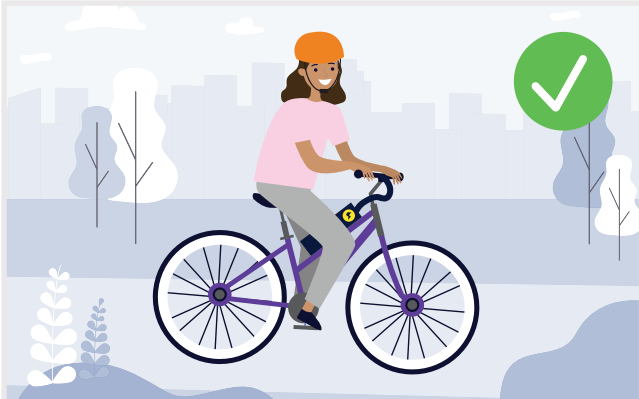
MOTORBIKES

- To ride on or off-road it must be registered with a full or recreation registration
- Helmet must be worn at all times.



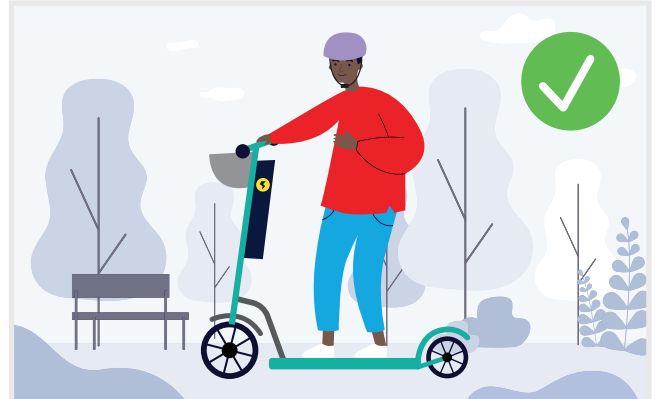
E-BIKES

- 25 km/h MAX speed
- Motor cannot provide power at speeds higher than 25km/h
- Helmet must be worn at all times
- No passengers
- Cannot be ridden on footpaths.



E-SCOOTER

- Be aged 16 yrs or over
- Max speed 20 kmph
- Helmet must be worn at all times
- No passengers
- Cannot be ridden on footpaths.



For more information, visit police.vic.gov.au/road-safety