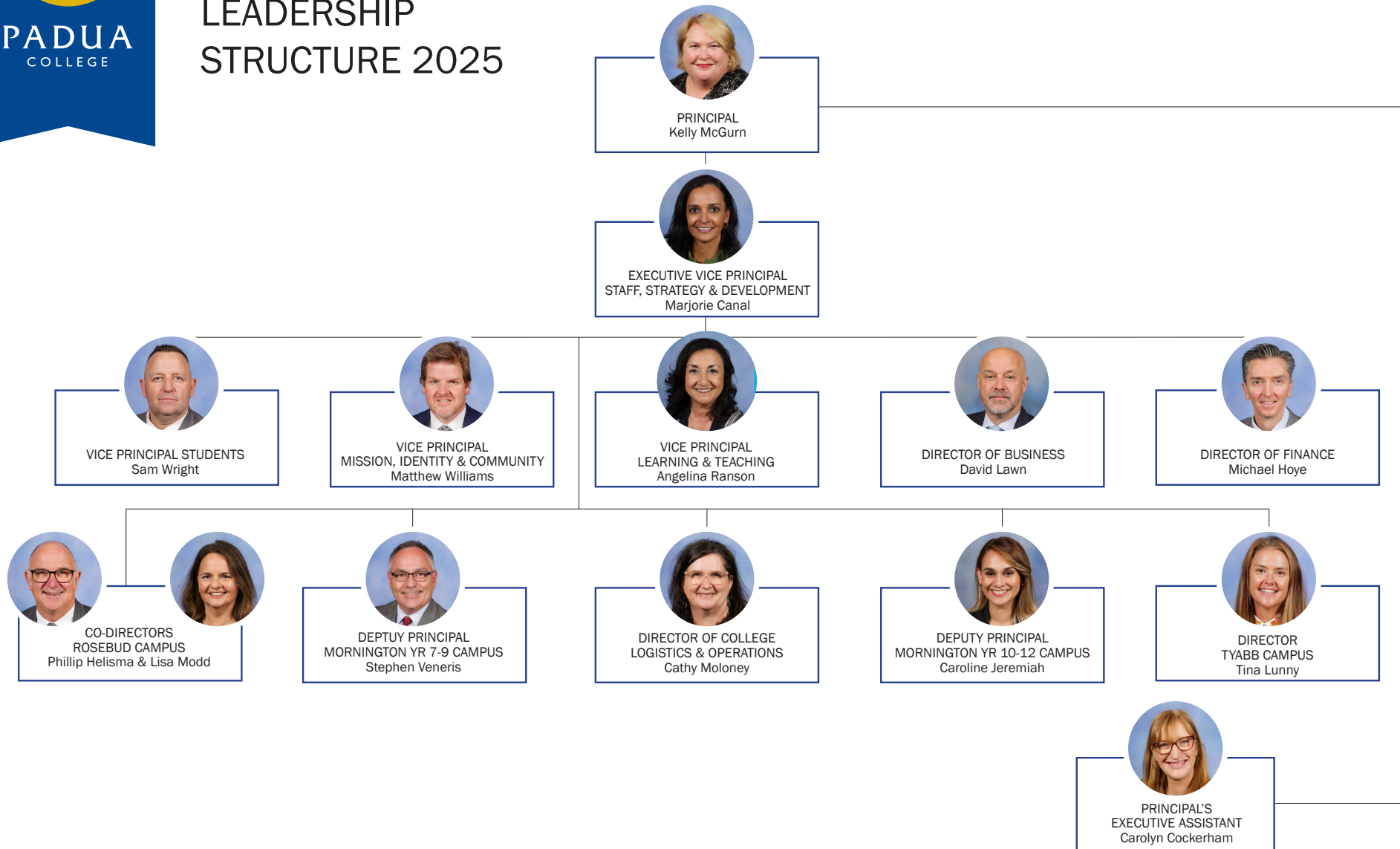
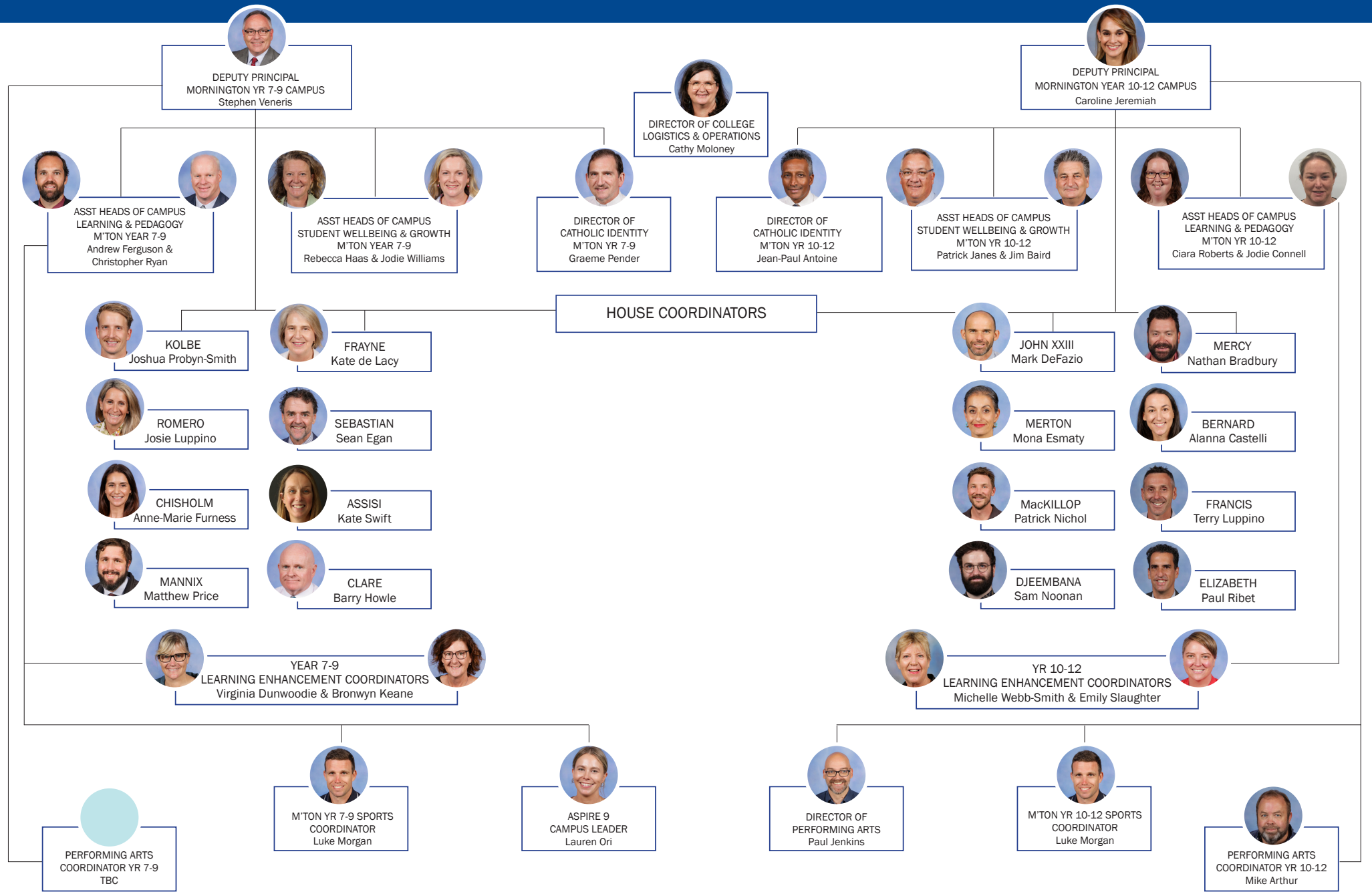




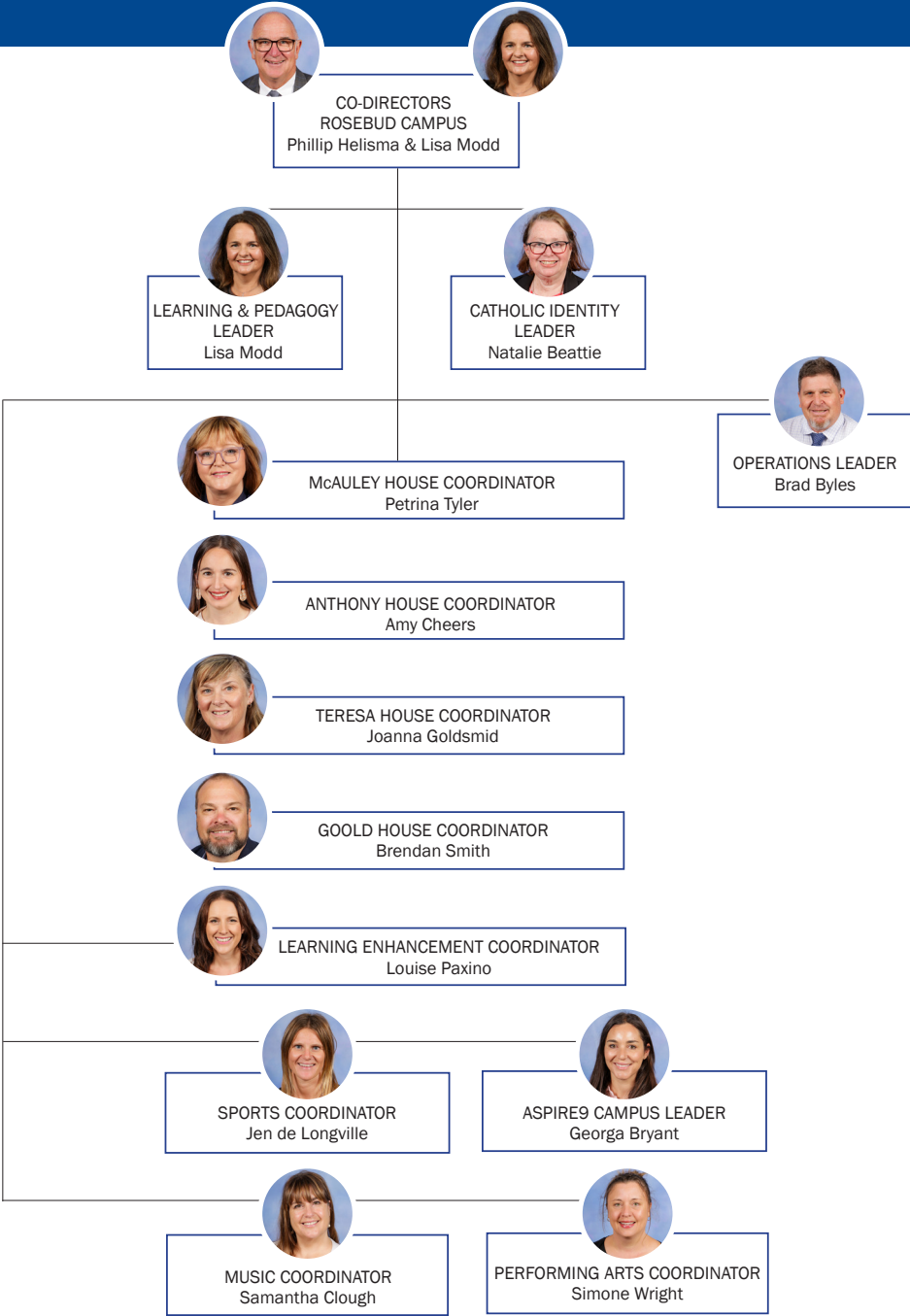
COLLEGE LEADERSHIP STRUCTURE 2025



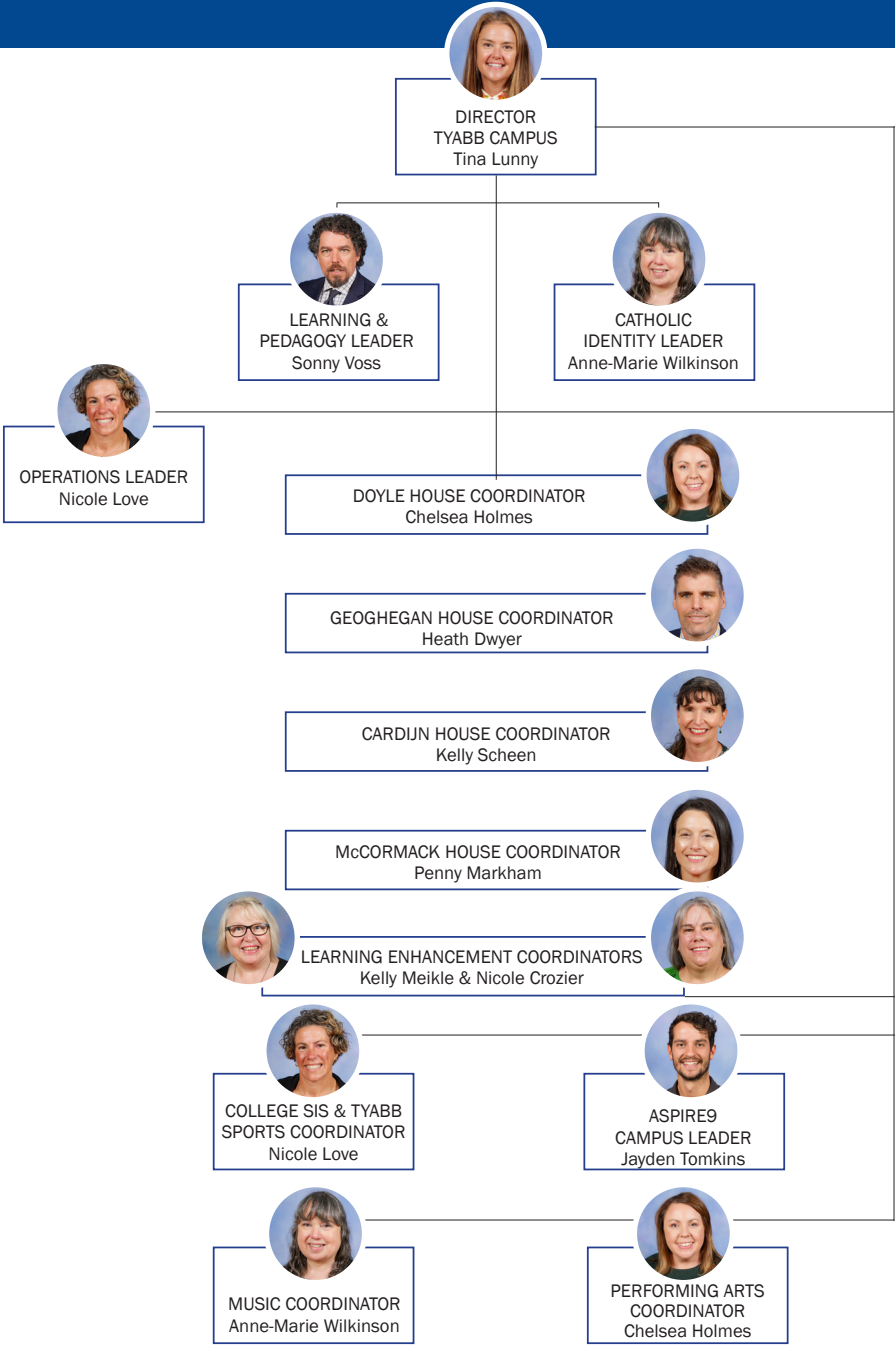
MORNINGTON CAMPUS



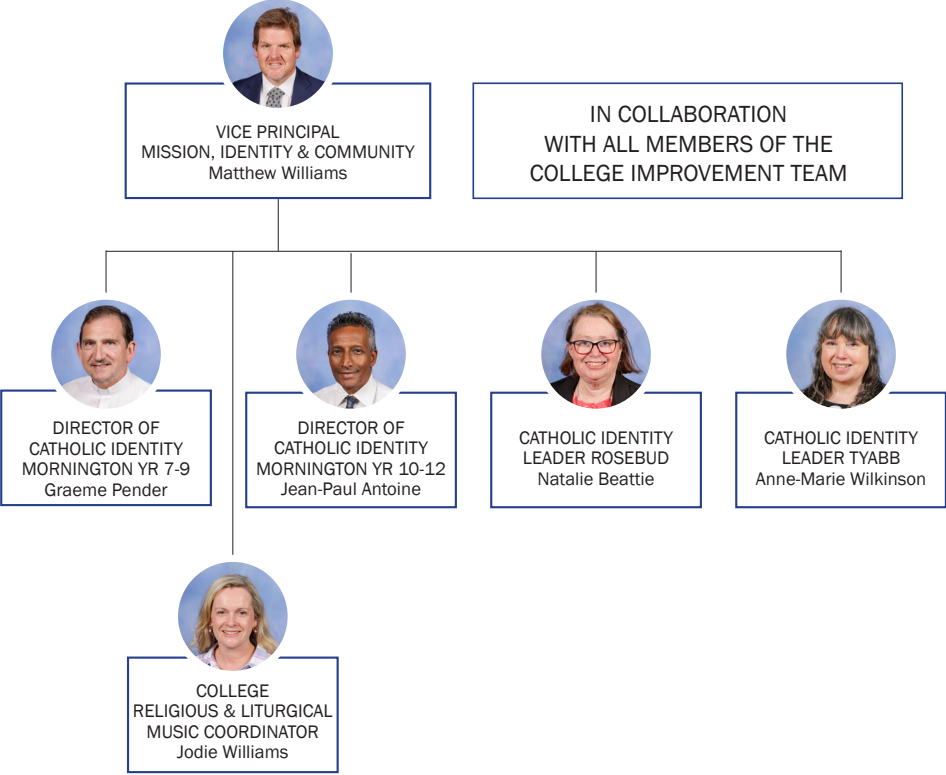
ROSEBUD CAMPUS



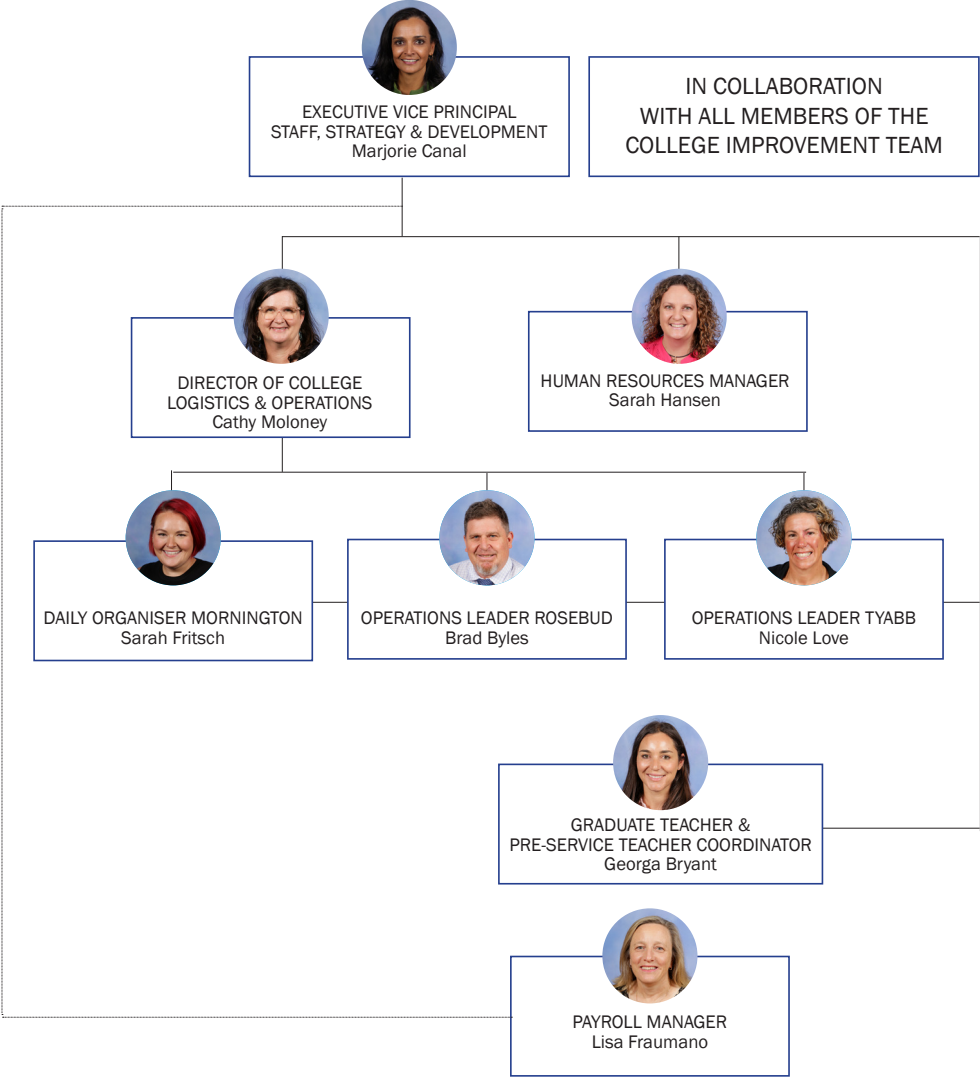
TYABB CAMPUS



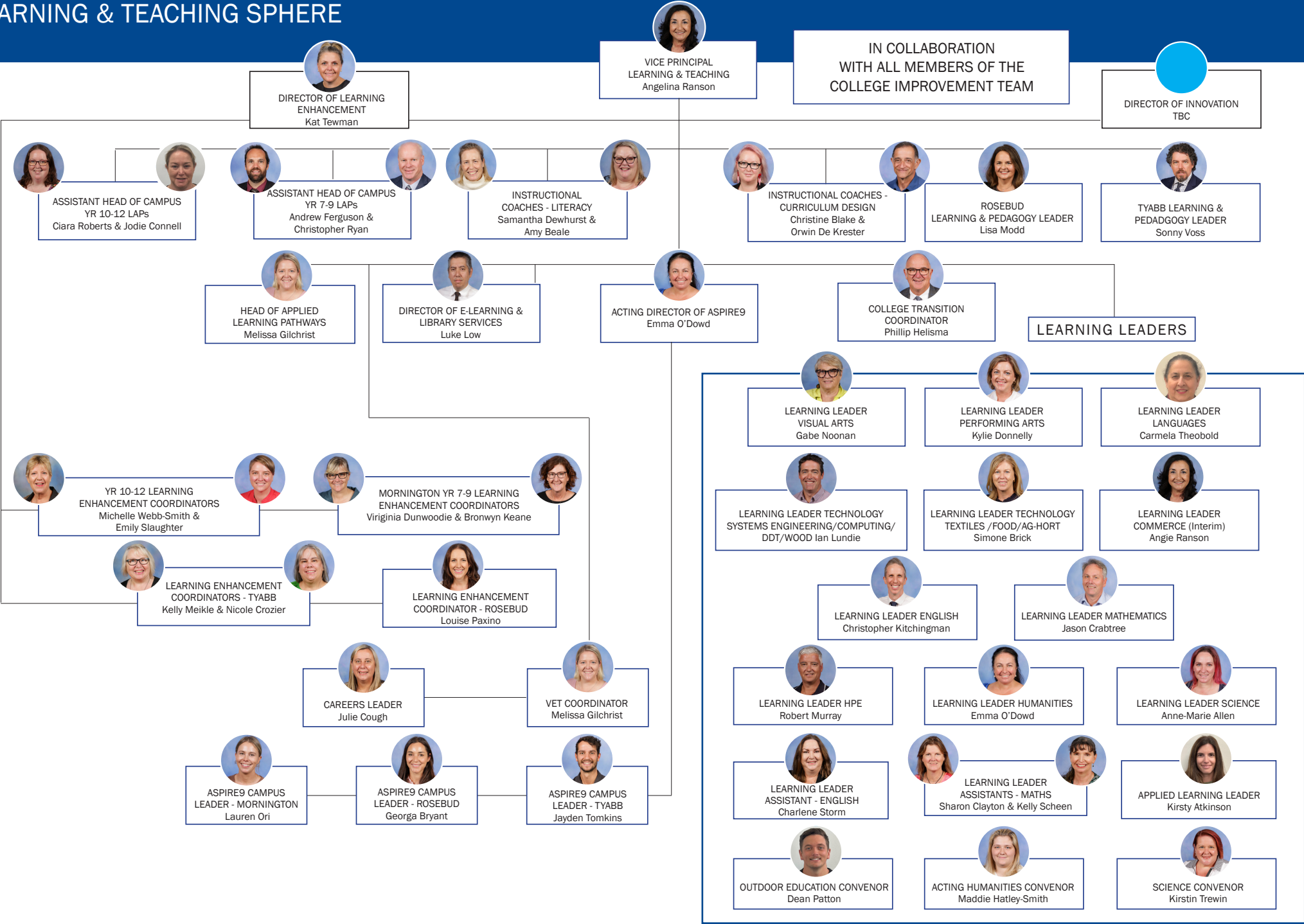
FAITH SPHERE



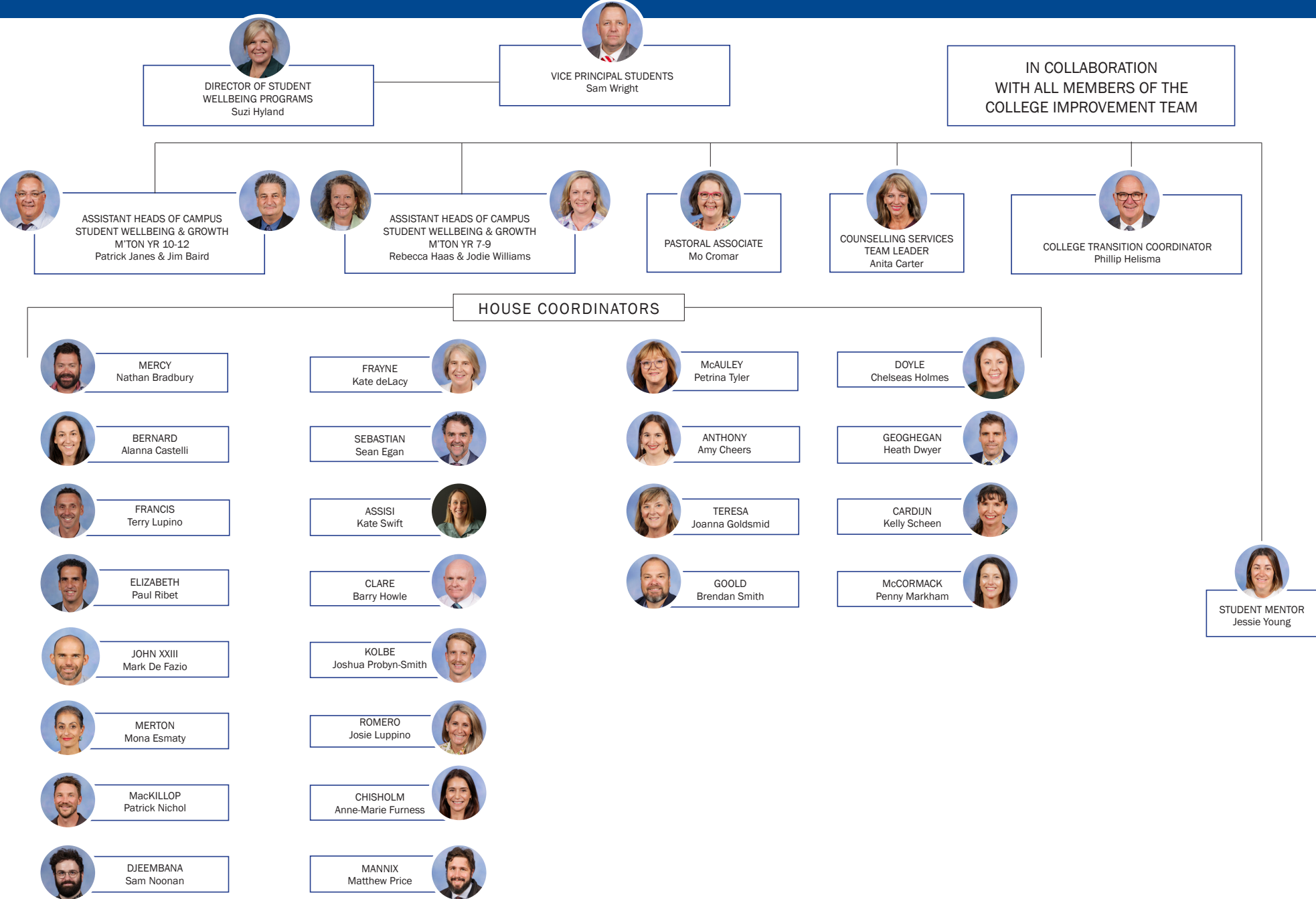
STAFF LEADERSHIP & MANAGEMENT SPHERE



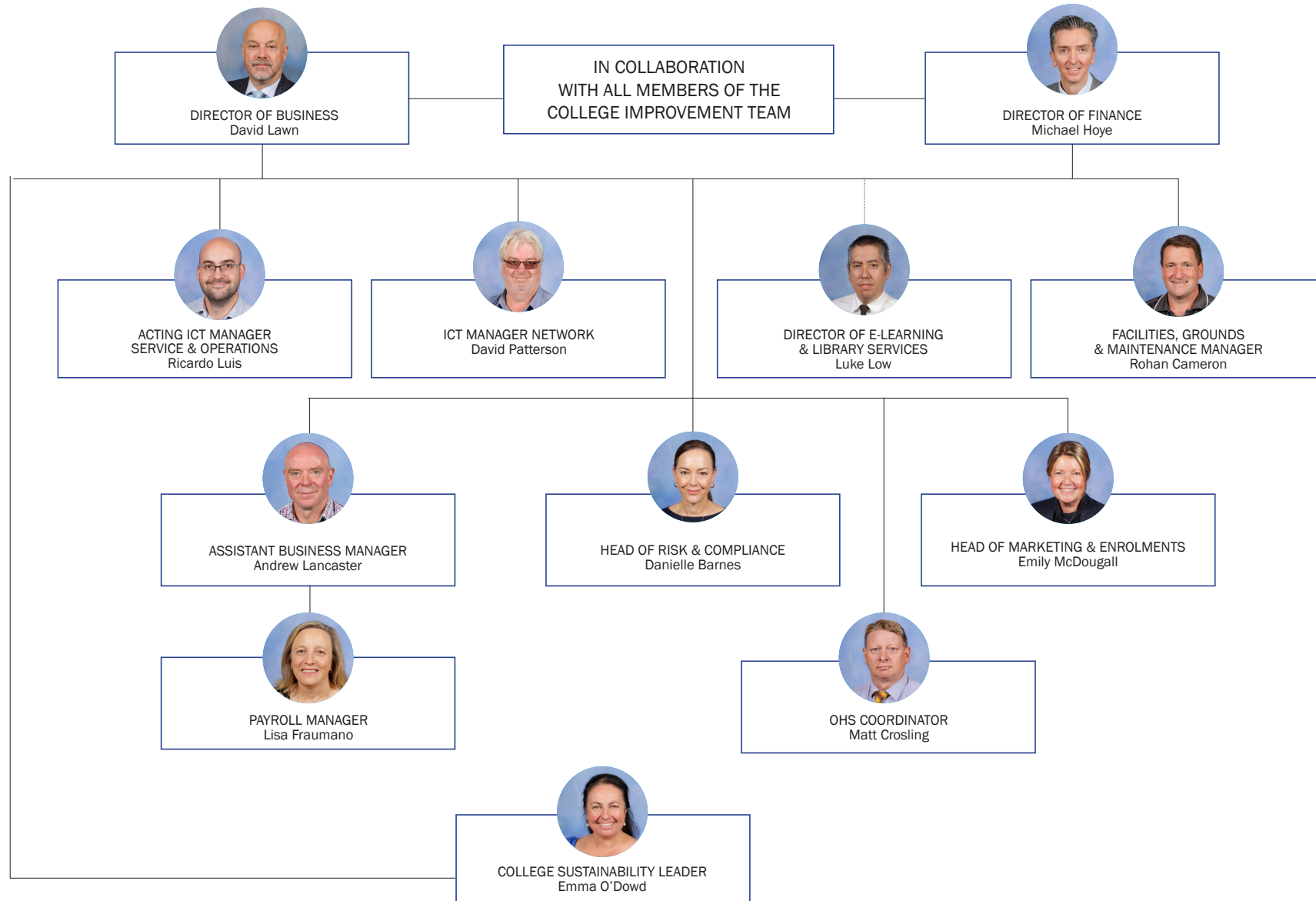
LEARNING & TEACHING SPHERE



WELLBEING SPHERE



BUSINESS & FINANCE SPHERE



COLLEGE POSITIONS

Principal
Kelly McGurn

Director of Innovation
Stephanie Murphy

Head of Applied Learning Pathways
Melissa Gilchrist

Counselling Services Team Leader
Anita Carter

**Executive Vice Principal Staff,
Strategy & Development**
Marjorie Canal

Director of Student Wellbeing Programs
Suzi Hyland

Learning Leaders

English - Christopher Kitchingman

Mathematics - Jason Crabtree

Science - Anne-Marie Allen

Humanities - Bridie Larkins (Acting)

HPE - Robert Murray

Visual Arts - Gabe Noonan

Performing Arts - Kylie Donnelly

Languages - Carmela Theobald

Commerce - Angie Ranson (Interim)

Technology - Ian Lundie & Simone Brick

Applied Learning - Kirsty Atkinson

Pastoral Associate
Mo Cromar

**Vice Principal
(Mission, Identity & Community)**
Matthew Williams

Director of Learning Enhancement
Kat Tewman

Assistant Business Manager
Andrew Lancaster

Vice Principal (Students)
Sam Wright

Instructional Coaches

Literacy

Samantha Dewhurst & Amy Beale

Curriculum Design

Orwin De Krester & Christine Blake

**Facilities, Grounds
& Maintenance Manager**
Rohan Cameron

Vice Principal (Learning & Teaching)
Angelina Ranson

ICT Managers
Ricardo Luis & David Patterson

Director of Business
David Lawn

Director of E-Learning & Library Services
Luke Low

College Liturgical Music Coordinator
Jodie Williams

Human Resources Manager
Sarah Hansen

Director of Finance
Michael Hoyer

Acting Director of Aspire9
Emma O'Dowd

College Sustainability Leader
Emma O'Dowd

Head of Marketing & Enrolments
Emily McDougall

Director of College Logistics & Operations
Cathy Moloney

College Transition Coordinator
Phillip Helisma

**Graduate Teacher &
Pre-Service Teacher Coordinators**
Georgia Bryant

Head of Risk & Compliance
Danielle Barnes

Principal's Executive Assistant
Carolyn Cockerham

Director of Performing Arts
Paul Jenkins

Student Mentor
Jessie Young

OHS Coordinator
Matt Crosling

Payroll & Manager
Lisa Fraumano